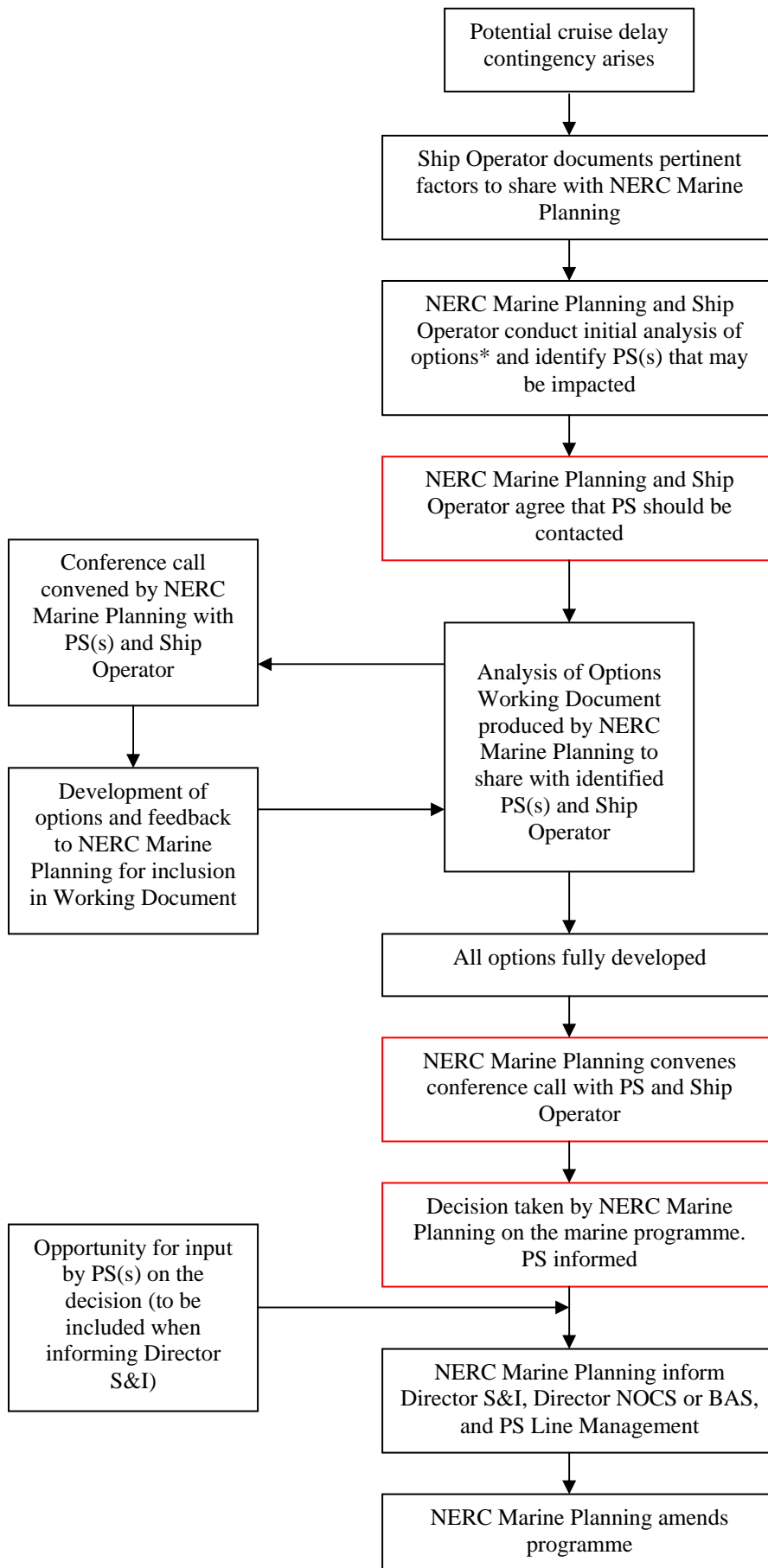


**Cruise Postponement Procedure**  
(Where a cruise delay contingency has the potential to impact on future cruises)



### **Explanatory Notes**

- Cruise delay contingency: where an issue has arisen that potentially affects the ability of the ship to adequately carry out scientific cruises and the time required to resolve the issue may result in a change to the published marine programme.
- The Ship Operator (NMF-SS or BAS) should initially document the pertinent factors. This document can then be used to facilitate discussions between NERC Marine Planning and the Ship Operator to outline options\* for the marine programme and identify PS(s) that may be impacted.
- NERC Marine Planning and the Ship Operator should decide on the correct point to inform the PS of the potential problem. This should balance when the PS needs to be alerted against providing the PS with unnecessary concern.
- NERC Marine Planning is responsible for producing an 'Analysis of Options Working Document' that can be shared with the PS. The PS can use this document to inform their science party on the current situation and gain their input. Feedback from the science party should be directed through the PS.
- Discussions are expected to continue as the situation develops, supported by conference calls and with all parties remaining informed by the updated working document.
- All relevant communication (from PS and the Ship Operator) from this point should be copied to NERC Marine Planning to allow inclusion in the working document, which will be circulated at relevant intervals.
- When the options are fully developed NERC marine planning will convene a conference call with the PS and Ship Operator to make a decision on the marine programme. Ideally an agreed decision can be made at this point, but ultimately the decision will lie with NERC.
- In the event that an agreed decision is not made, the PS will be provided with the opportunity to comment on the decision. NERC Marine Planning will include this comment when communicating the decision to the Director of Science and Innovation.
- NERC Marine Planning will be responsible to officially amend the marine programme.

\*The options for the marine programme will be developed with respect to the [NERC policy on prioritisation of bids for marine facilities](#).